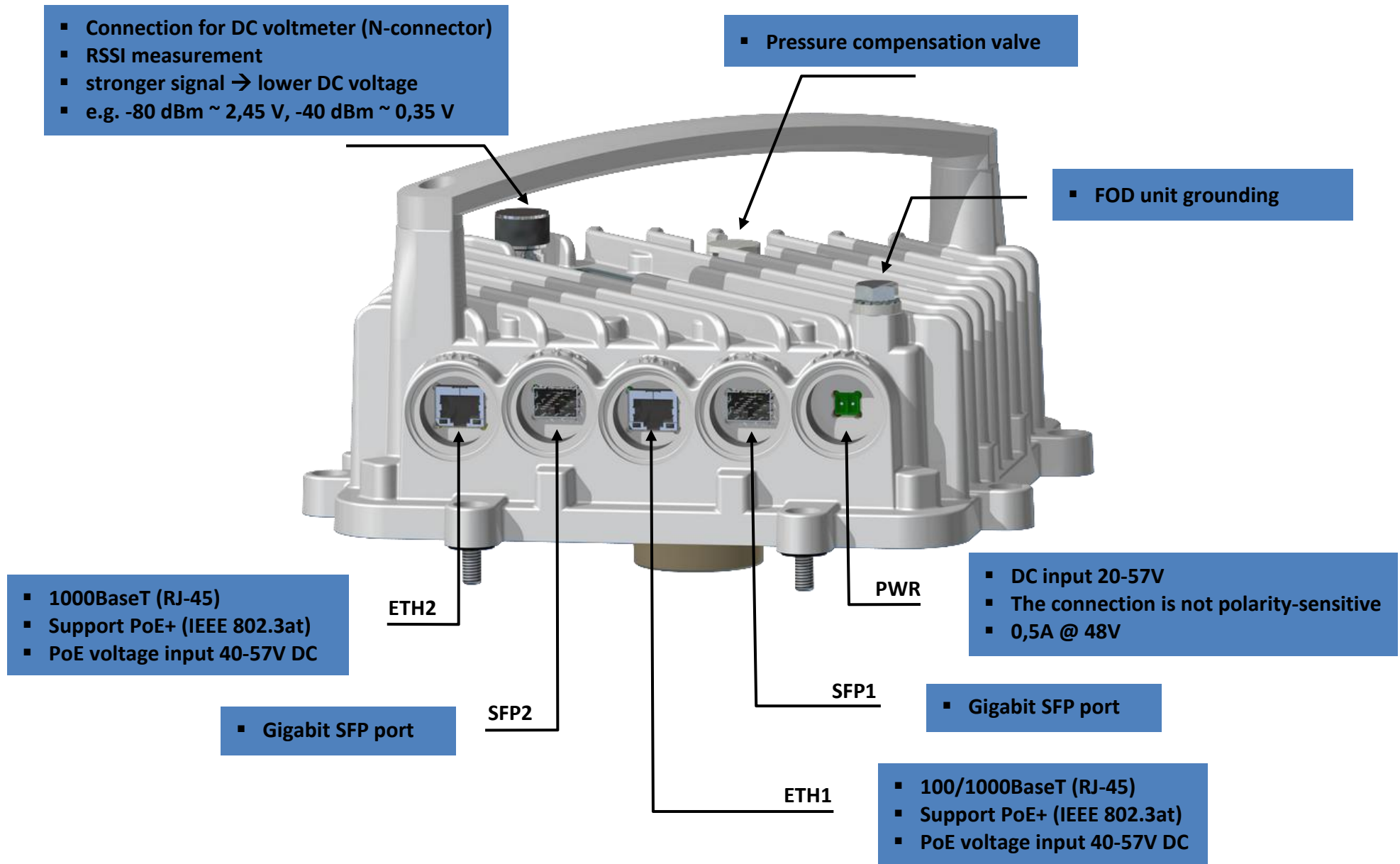
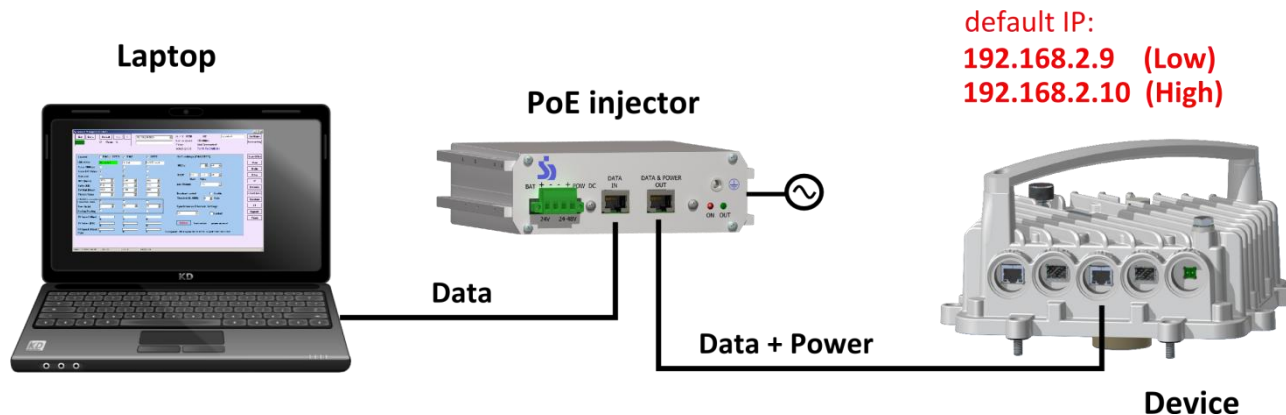


Microwave link BT series – Quick Start Manual



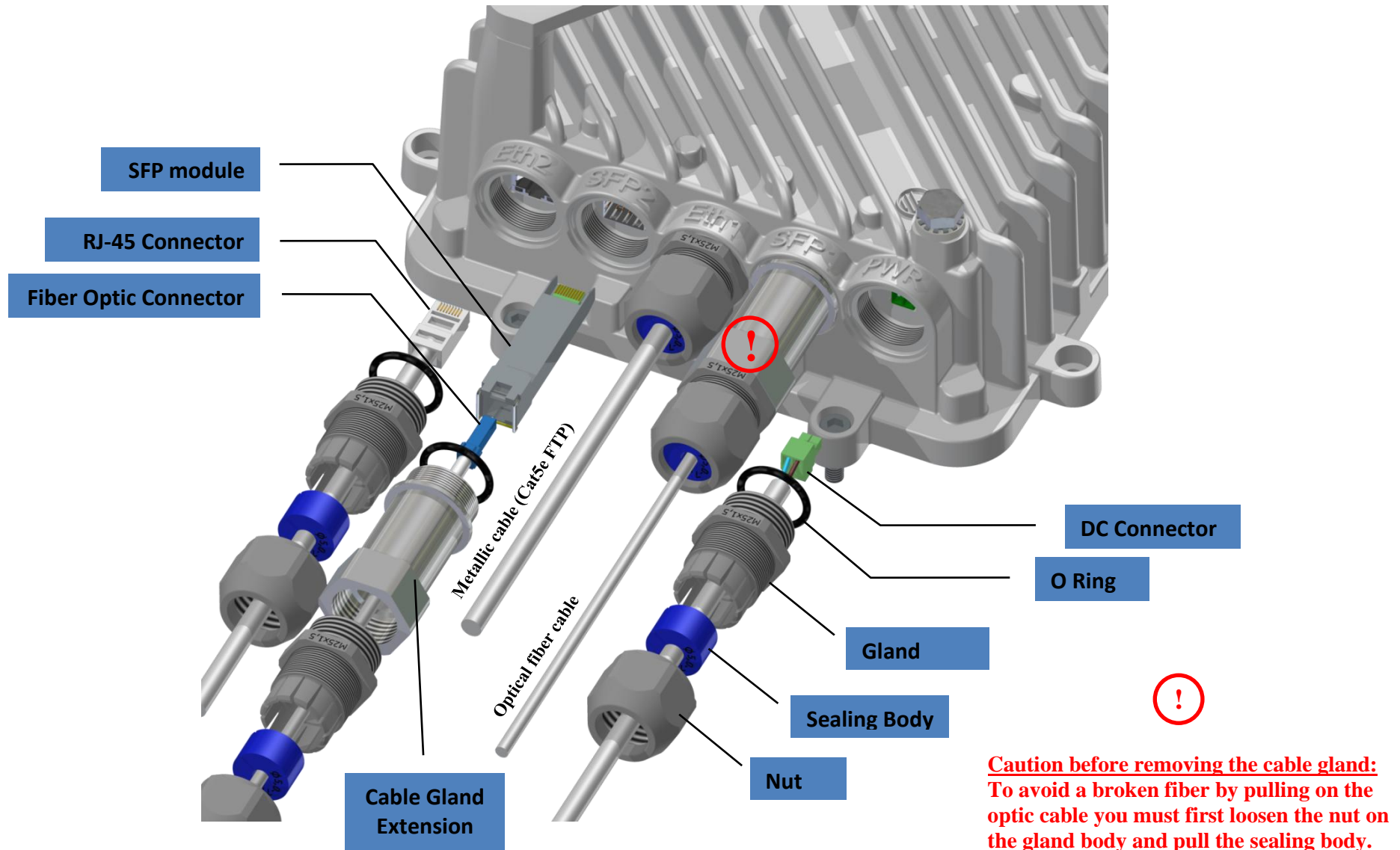
How to connect to the device

- Connect the device to a power source. The device can be powered separately by using the power port (20-57 VDC) or over the Ethernet 802.3at (40-57 VDC). These connections are not polarity sensitive.
- Connect the device to a computer by Ethernet cable. Use **ETH1 / SFP1** to access to the device.
- The default IP address of the device is **192.168.2.9** (TX low freq.) and **192.168.2.10** (TX high freq.).
- To change IP address open the Summit Management System (sms.exe) and click the „**ScanOdus**“. Within few a seconds, the device will appear in the table. Select your device and click „**Set IP**“ to set new IP address (Subnet mask and Default gateway are not filled!).
- The IP address of your computer must be in the same subnet as the device in order to connect to it.
- Continue with the configuration process according to the user manual SMS.



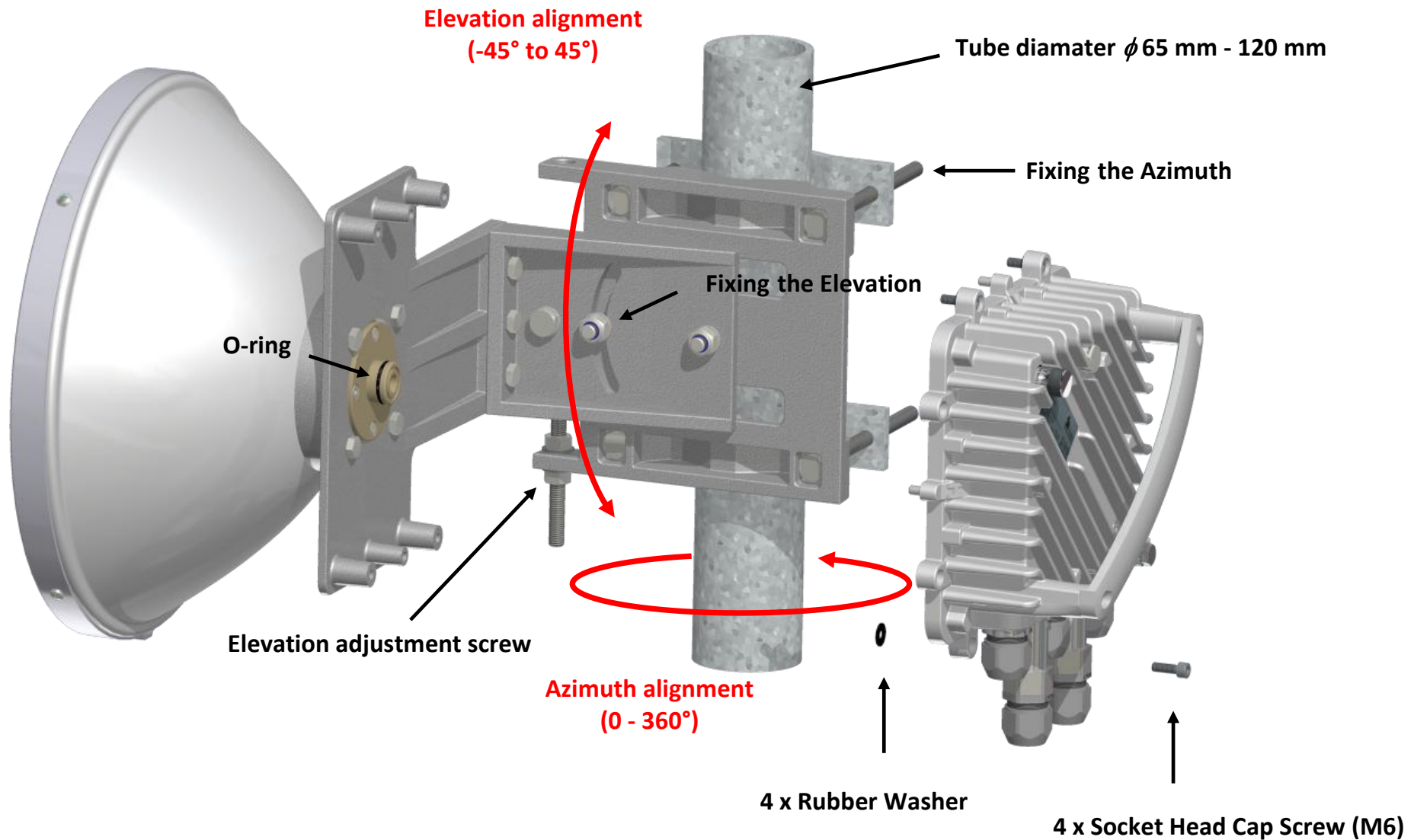
Installing the connectors on FOD unit

Installing tools: Spanner (19, 29 mm)



Installing the FOD unit on the antenna

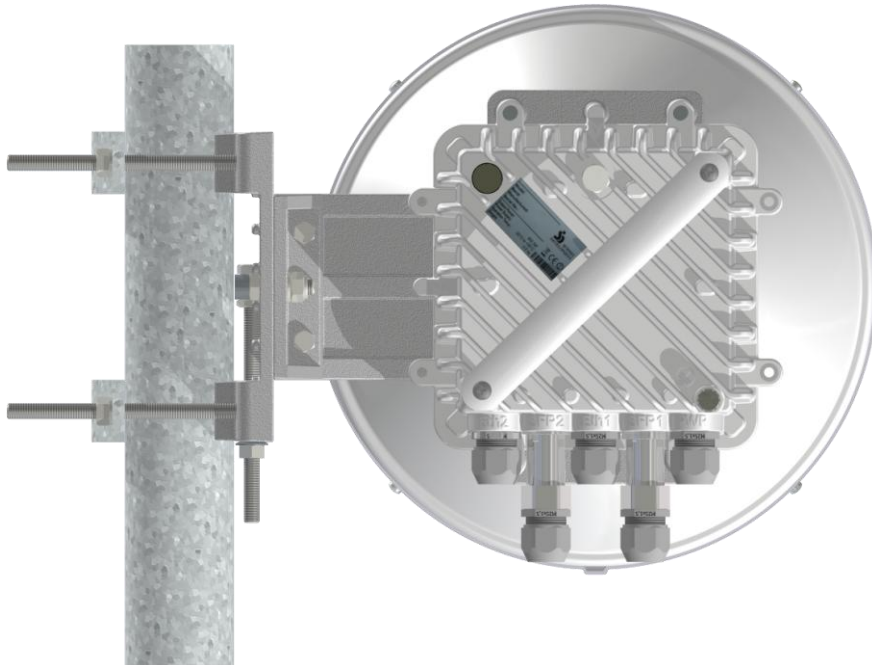
Installing tools: Spanner (13, 17 mm), Allen (5 mm)



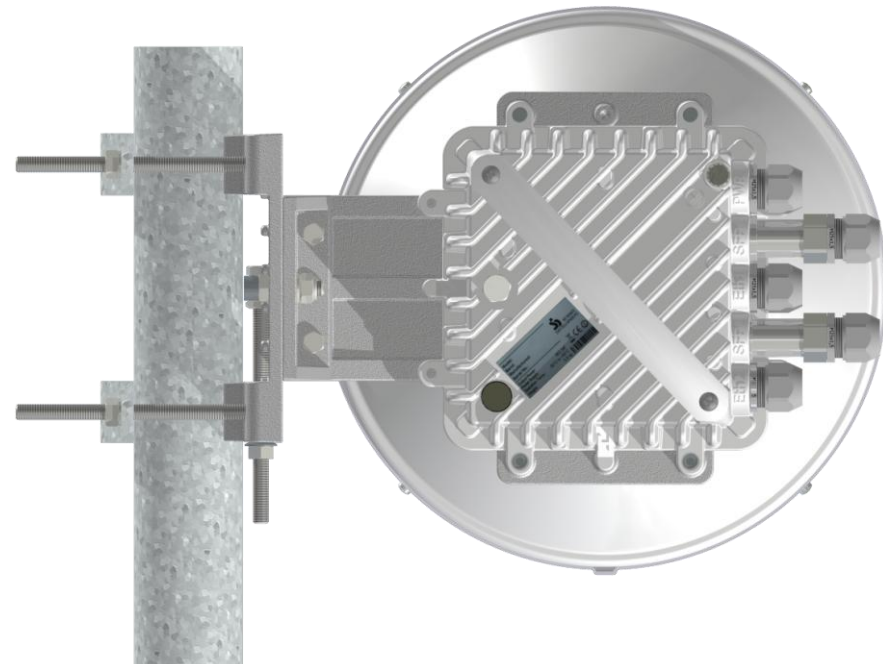
Microwave link polarization

The polarization is defined by turning FOD unit through 90°

Vertical polarization



Horizontal polarization



Application diagram

